

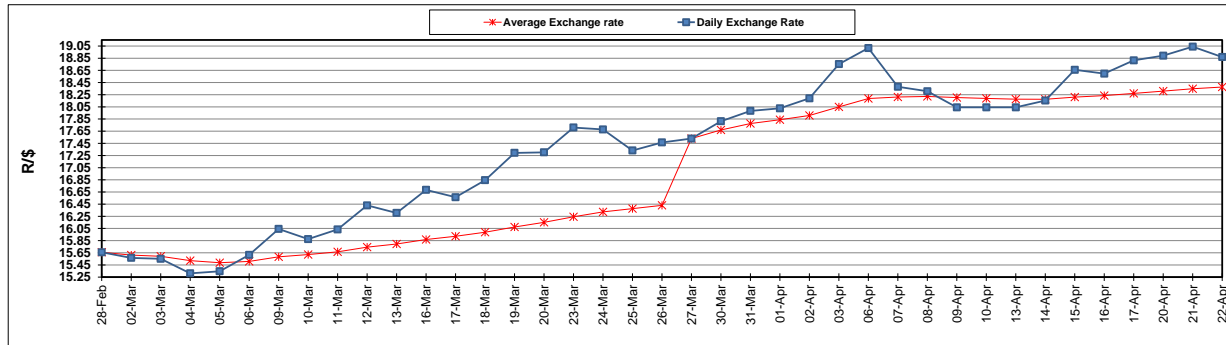
	PETROL 95 ULP	PETROL 93 ULP & LRP	DIESEL 0.05%	DIESEL 0.005%	ILL. PAR.
GAUTENG PUMP PRICE (SA c/l) AS FROM 01/04/2020	1,396.000	1,376.000	-	-	-
WHOLESALE PRICE (SA c/l) AS FROM 01/04/2020	-	-	1,269.560	1,273.960	672.828
SINGLE NATIONAL MAXIMUM RETAIL PRICE	-	-	-	-	840.000
BASIC FUEL PRICE - 22/04/2020 (SA c/l)	260.680	248.921	249.208	258.894	151.658
PRESS RELEASE CONTRIBUTION TO BFP 01/04/2020 - 22/04/2020 (SA c/l)	448.770	438.770	518.630	523.030	468.128
UNIT OVER/(UNDER) RECOVERY - 22/04/2020 (SA c/l)	188.090	189.849	269.422	264.136	316.470
AVERAGE BASIC FUEL PRICE 27/03/2020 - 22/04/2020	308.021	301.526	409.835	420.037	303.527
AVERAGE UNIT OVER/(UNDER) RECOVERY 27/03/2020 - 22/04/2020	175.360	169.960	134.848	129.203	195.864

ANALYSIS MOVEMENT OF AVERAGE OVER/(UNDER) RECOVERY

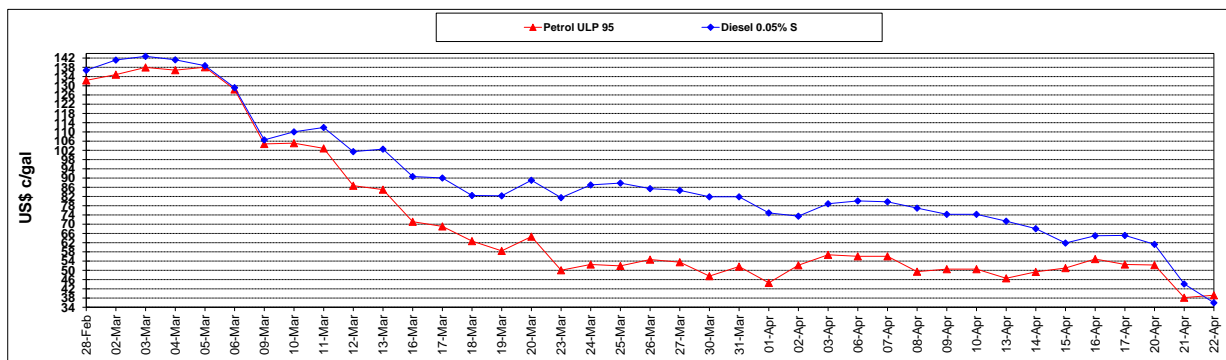
	PETROL 95	PETROL 93	DIESEL 0.05%	DIESEL 0.005%	ILL. PAR.
- MOVEMENT IN INTERNATIONAL PRODUCT PRICES	207.975	201.887	178.244	173.680	228.003
- MOVEMENT IN EXCHANGE RATE	(32.615)	(31.927)	(43.396)	(44.476)	(32.139)
AVERAGE UNIT OVER/(UNDER) RECOVERY 27/03/2020 - 22/04/2020	175.360	169.960	134.848	129.203	195.864

R/\$ EXCHANGE RATE - (R/\$18.8696 - 22/04/2020)

EXCHANGE RATE USED IN BASIC FUEL PRICE



INTERNATIONAL PRODUCT PRICES OF BASKET USED IN BASIC FUEL PRICE



BASIC FUEL PRICE IN SA CENTS PER LITRE

